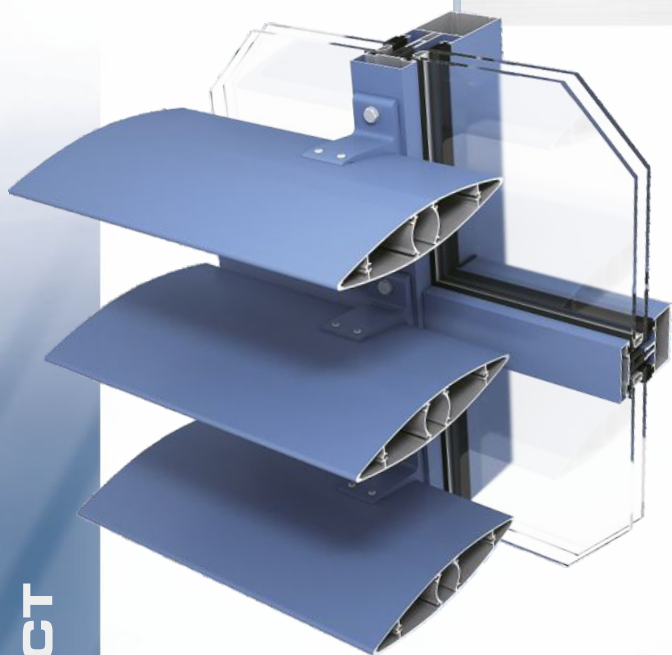


SYSTEM DESCRIPTION



Ponzio Sun Protect system is a modern solution to protect the buildings from the excessive sunlight. The louvers used in the constructions with large glazed areas, protect the interiors of the buildings from sunlight and significantly lower the temperature inside the building.

The system is composed of a range of elliptic profiles (100 – 400 mm) and “z” shaped louvers - 40 and 80 mm wide.

Light covers are attached to load bearing walls, curtain walls, as well as windows. The system made of fixed elements and mounting brackets allows to attach the profiles perpendicular to the walls, as well as on the angle of 15°, 30° and 45° degrees.

